

Sockets



RAM Socket

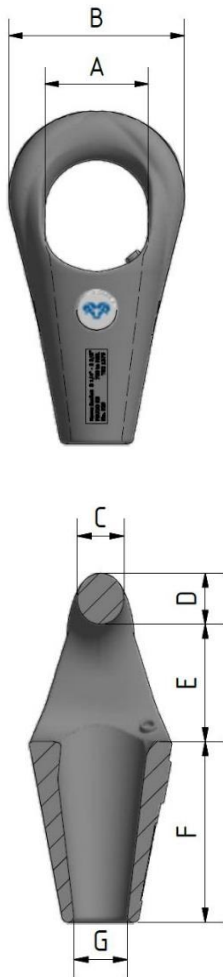
Type Approved by DNV-GL

Offshore accessory to be used for Temporary and Mobile Mooring as defined in DNVGL-OS-E301,
Position Mooring

Type Approved by ABS

For use on an ABS classed vessel, MODU or facility

as defined in 2009 ABS guide for Certification of Offshore Mooring Chain (updated 10 February 2014)



Rope	A	B	C	D	E	F	G	R3 MBL kN	R4 MBL kN
37-42	95	160	40	45	102	156	45	1599	1964
43-48	109	183	46	51	117	178	51	2063	2535
49-54	122	206	51	58	131	201	58	2580	3170
55-60	136	229	57	64	146	223	64	3147	3867
61-68	154	259	65	73	165	253	73	3976	4885
69-75	170	286	71	80	182	279	80	4767	5857
76-80	181	305	76	86	194	297	86	5366	6594
81-86	195	328	82	92	209	319	92	6122	7522
87-93	210	354	89	100	226	345	100	7051	8664
94-102	231	389	97	109	248	379	109	8315	10217
108-115	260	438	110	123	279	427	123	10263	12610
122-130	294	495	124	139	316	483	139	12663	15559
132-140	317	533	133	150	340	520	150	14336	17615



Type Approval by:

DNV-GL, ABS for 31 – 130 mm

Application:

Temporary and Mobile Mooring

Manufactured & Tested:

in Germany by Feuero

Material:

Cast Steel – Grade R3, R4